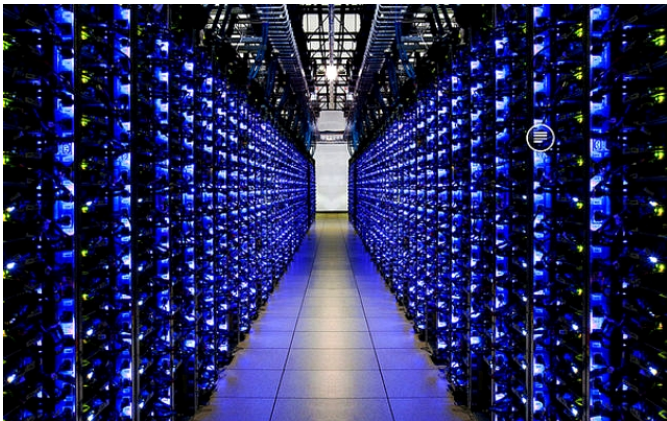


Europe's EMC-Based Software Defined Data Centre

Written by Marco Attard
17 April 2014

Adapt is the first managed service provider with a software defined data centre in Europe making of EMC technologies, including VPLEX, VNX2, ViPR, XtremIO, Recoverpoint and Storage Resource Management suite.



The above mentioned EMC technologies are in turn combined with the Adapt dynamic management and tiered services.

"This exciting new platform and set of service offerings enables customers to rapidly and affordably take advantage of the cloud," EMC claims. "[It] gives Adapt's customers the ability to take advantage of new capabilities without significant capital expense or resourcing requirements, addressing technical skills gaps in their business."

According to the two companies the partnership provides extreme performance options, non-disruptive migrations, performance-aligned services, flexible recovery options, dynamic tiered models, predictable and outcome based spends, and continuous UK-based availability.

It also should enable Adapt to develop future consumption-based offerings as the market evolves.

"As the first service provider in Europe to fully leverage EMC's Software Defined Data Centre platform, we are future proofing our critical infrastructure services and creating the data centre of the future," Adapt concludes.

Europe's EMC-Based Software Defined Data Centre

Written by Marco Attard
17 April 2014

Go [Adapt Aligns Future Service Vision With EMC](#)