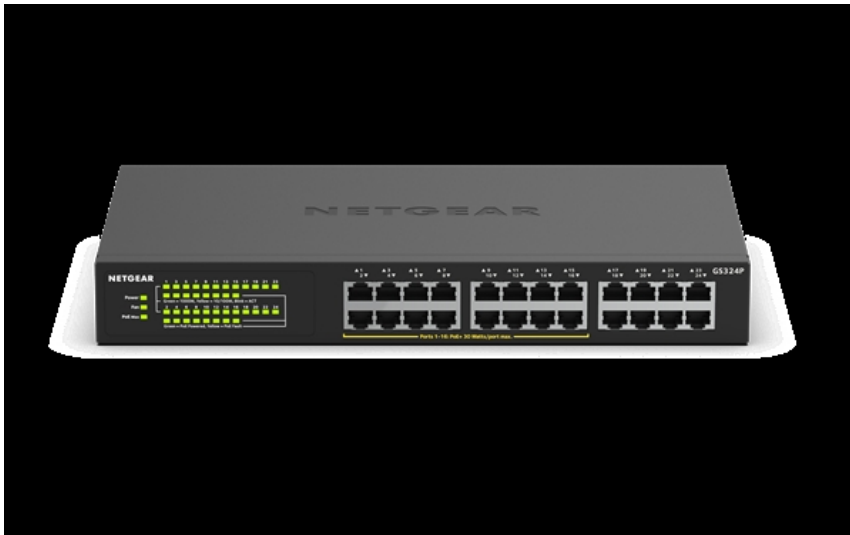


24-Port Unmanaged PoE Switches From Netgear

Written by Frederick Douglas
05 December 2019

Netgear announces what it claims are the first high-power unmanaged gigabit ethernet 24-port PoE+ switches on the market with "PoE Power Auto-Balance Allocation," namely the GS324P and the GS324PP switches.



The GS324P is a 24-port unmanaged PoE+ switch able to provide a 190W PoE budget across 16 PoE+ ports. It also includes 8 non-PoE ports. Meanwhile the PS324PP offers a 380W PoE power budget across 24 ports for connection across existing core networks. Both switches promise the best cost/PoE budget ratio, and feature a compact and quiet design allowing for either desktop or rackmount placement.

According to the company, "PoE Power Auto-Balance and Allocation" technology automatically balances the PoE power allocated to each port according to device need, independent of the PoE class detected. The result is optimal power allocation and energy efficiency across PoE ports. The models deliver the power the device needs at the "most granular level," allowing connection of more powered devices vs standard unmanaged PoE switches.

"With the growth of PoE products on the market, Netgear is keeping step with demand by developing more switches to address the growing market needs," the company says. "We are happy to deliver the first high-power unmanaged Gigabit Ethernet 24-Port PoE+ Switches on the market with PoE Power Auto-Balance and Allocation."

The GS324PP and GS324P switches are available now.

24-Port Unmanaged PoE Switches From Netgear

Written by Frederick Douglas
05 December 2019

Go [Netgear Introduces New 24-Port Gigabit Ethernet Unmanaged Poe+ Switches With Up to 380w Power Budget](#)